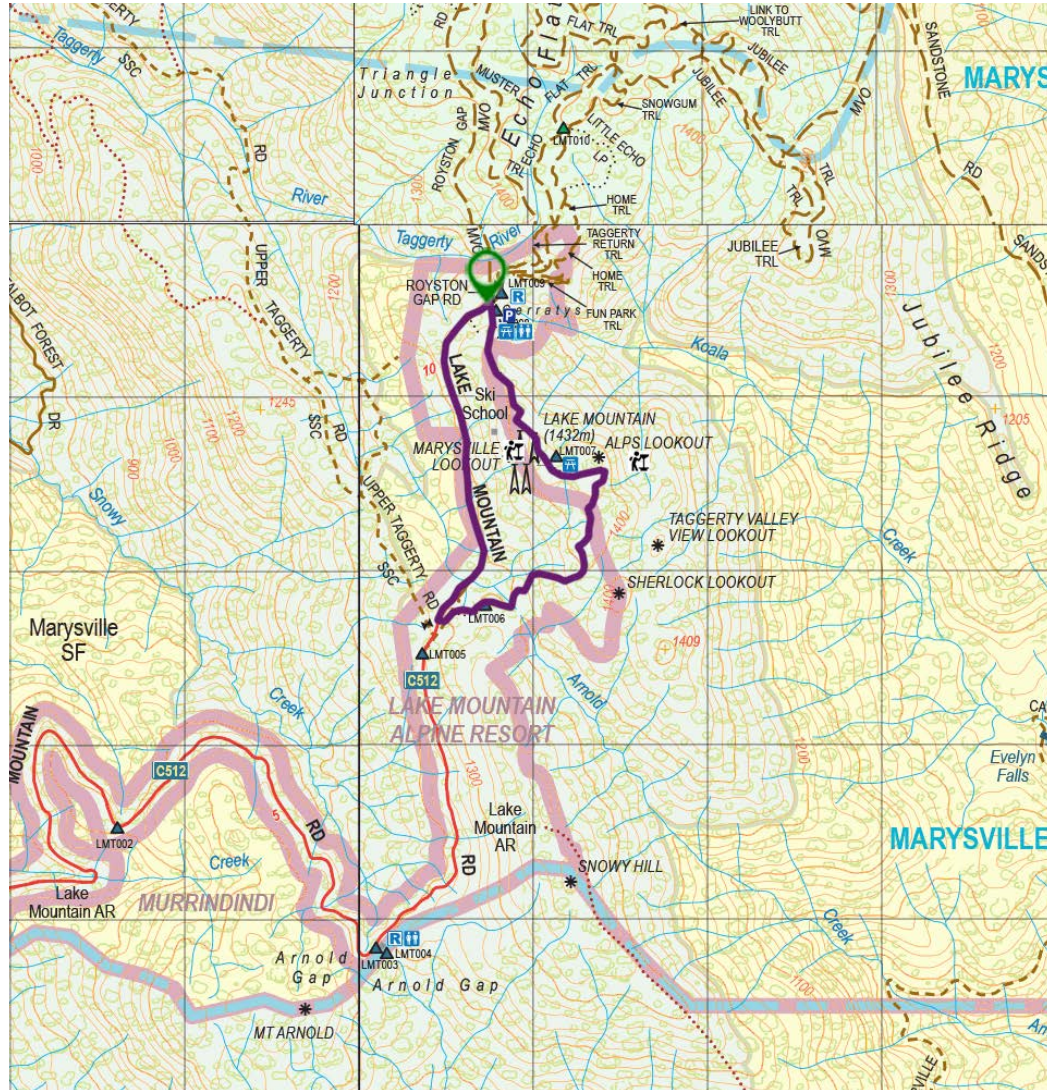


LAKE MOUNTAIN

SUMMIT LOOP WALK



LAKE MOUNTAIN

SUMMIT LOOP WALK

📍 LENGTH: 5 KMS
🕒 TIME: 2 HOURS
👤 TYPE: RETURN
⚡ GRADE: 2

Start: Gerraty's Car Park

Finish: Gerraty's Car Park

GPS Start: Lat: -37.49542 | Long: 145.87742

GPS Finish: Lat: -37.49542 | Long: 145.87742

Max Elevation: 1443m

Melways: N/A

Dogs Allowed: No

Contact: Parks Victoria 13 19 63

Flora: Snow Gum, Mountain Ash, Mountain Hickory Wattle, Bow Bow Daisy, Long Leaf Wax Flower, Alpine Star Bush

Fauna: Leadbeater's Possum, Mountain Pygmy-Possum, Bogong moths, Little Moths, Bush Rat, Common Wombat, Agile Antechinus

Facilities: Car parking, toilets (+accessible), refreshments available at Lake Mountain Resort. Camping is only permitted in certain areas at Lake Mountain and must be booked in advance

TRAIL NOTES

The trail goes through Snow Gum woodland and granite outcrops to a view of the Victorian Alps on a clear day.

Maintained, forest path with a gentle incline to the summit.



DID YOU KNOW?

Lake Mountain Alpine Resort is considered the most popular ski resort in Australia based on visitor numbers. This is due to its proximity to Melbourne and is made up of mainly casual visitors.