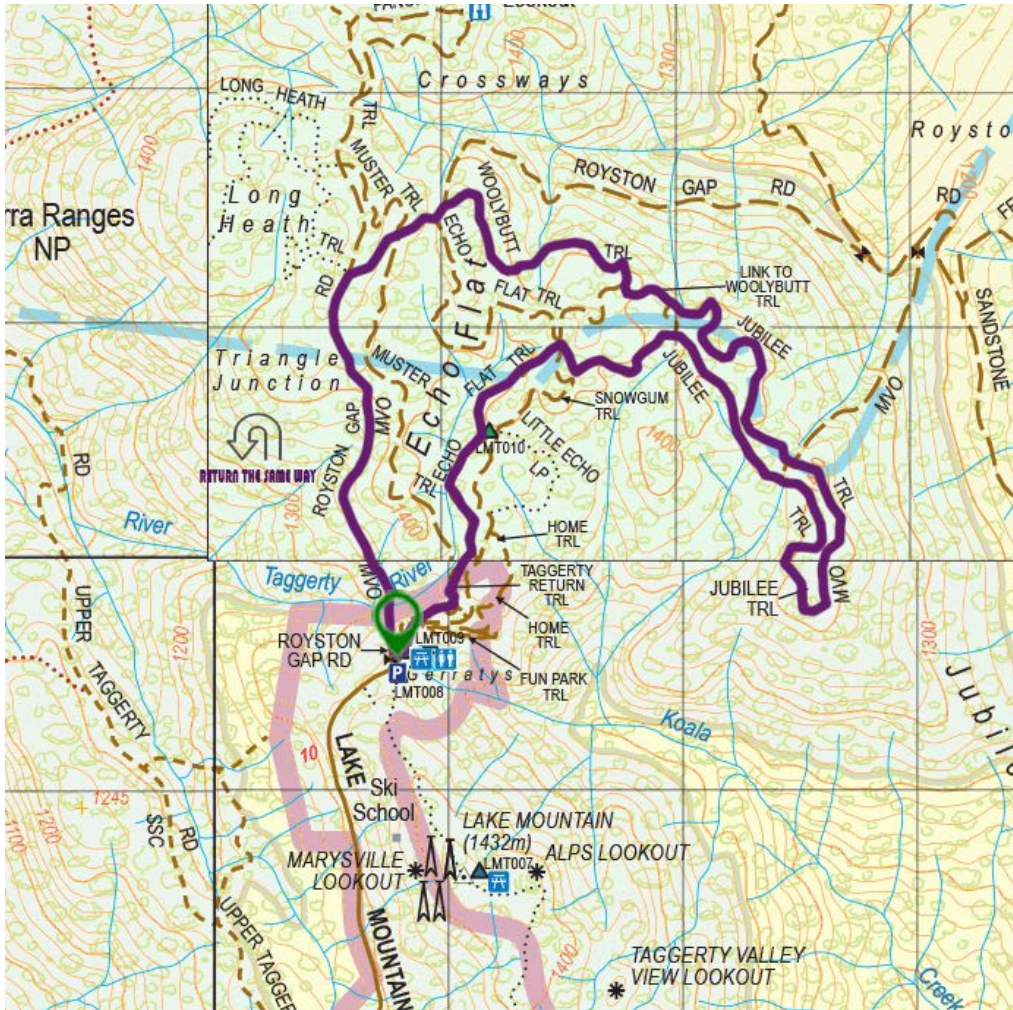


LAKE MOUNTAIN

WOOLYBUTT LOOP



LAKE MOUNTAIN

WOOLYBUTT LOOP

📍 LENGTH: 14.3 KMS
🕒 TIME: 5 HOURS
👤 TYPE: RETURN
⚡ GRADE: 4

Start: Gerraty's Car Park
Finish: Gerraty's Car Park
GPS Start: Lat: -37.49542 | Long: 145.87742
GPS Finish: Lat: -37.49542 | Long: 145.87742
Max Elevation: 1443m
Melways: N/A
Dogs Allowed: No
Contact: Parks Victoria 13 19 63

Flora: Snow Gum, Mountain Ash, Mountain Hickory Wattle, Bow Bow Daisy, Long Leaf Wax Flower, Alpine Star Bush
Fauna: Leadbeater's Possum, Mountain Pygmy-Possum, Bogong moths, Little Moths, Bush Rat, Common Wombat, Agile Antechinus
Facilities: Car parking, toilets (+accessible), refreshments available at Lake Mountain Resort. Camping is only permitted in certain areas at Lake Mountain and must be booked in advance

TRAIL NOTES

This walk is designed as an all day walk with plenty of resting places for picnics and views along the way.

Well maintained trails with some steep parts. Reasonable fitness level required.

